

TIBCO ACTIVEMATRIX BUSINESSWORKS

AT A GLANCE

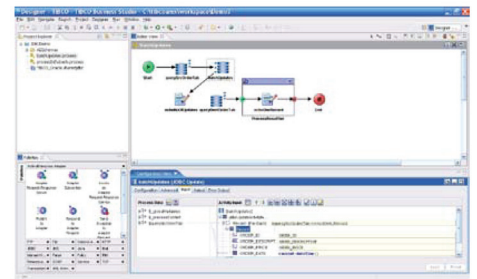
TIBCO ActiveMatrix BusinessWorks is a standards-based service creation, orchestration, and integration product built to run natively with other ActiveMatrix products. It enables companies to expose existing systems as services, build new services, and orchestrate and assemble services into more flexible applications with little or no coding.

BENEFITS

- Reduces costs by enabling developers and administrators to build and change applications with little or no coding. Organizations who have implemented SOA with ActiveMatrix BusinessWorks have achieved 30% to 60% greater productivity compared to alternative technologies.
- Reduces total cost of ownership with built-in governance support that allows you to add governance without impacting existing work.
- Increases flexibility by providing a vendor-neutral environment, with native support through ActiveMatrix for Java, .NET, C++, and Ruby support for different applications and technologies through TIBCO Adapters™.
- Enables you to start small with ActiveMatrix BusinessWorks and add other ActiveMatrix products or third-party products as needed.
- Reduces total cost of ownership because it is built on open standards and includes native support for web services, leading JMS providers, and Service Component Architecture (SCA).
- Provides proven performance, scalability, and reliability. TIBCO customers have deployed applications supporting up to 1 billion messages per day, or over 25,000 messages per second, with 99.999% or greater uptime.

Integration is a critical component of your service-oriented architecture (SOA). Most new composite applications you build need to leverage your existing applications. If you are going to succeed with SOA, and deliver new business functionality in less time and cost, integration must also be designed for SOA. It must be built from the ground up on standards so you can easily expose existing applications as reusable services, assemble and orchestrate these services to create more flexible composite applications, and deploy and manage applications more efficiently.

TIBCO ActiveMatrix BusinessWorks™ is one of the leading service creation, orchestration, and integration products on the market. It has been deployed by over 1000 companies worldwide and is the foundation for several of the largest mission critical service-oriented business applications in production today. Built entirely on open standards, ActiveMatrix BusinessWorks enables companies to expose existing systems as services, build new services, and orchestrate and assemble services into applications with little or no coding. Built to run natively with other ActiveMatrix products, it enables you to start small and add other capabilities to your SOA as you need them.



TIBCO ActiveMatrix BusinessWorks makes it possible to implement services, composite applications, and integration with little or no coding by combining packaged functionality for integration, service development, and service orchestration within the Eclipse Integrated Development Environment (IDE).

ATTRIBUTES & CAPABILITIES

Service Creation, Orchestration, Integration

A rich palette of activities to access, mediate, route, transform, and deliver XML or non-XML data such as COBOL copybooks across different protocols including HTTP, JMS, FTP, and e-mail.

Rich service assembly, orchestration, integration, exception handling, and distributed transaction capabilities, including BPEL 2.0 support.

Graphical service creation with one-click import/ export of service definitions from/ to registries.

Distributed, Grid-Based Architecture

A fully distributed, high performance grid-based architecture for hosting services, orchestration, adapters, and distributed transactions.

Advanced reliability and recoverability capabilities such as support for flow control, or dependency tracking, and the ability to automate self-healing.

Integrated Services Environment

Enables developers to build services, processes, and applications through configuration with little or no coding within the Eclipse IDE.

SCA-based assembly of ActiveMatrix BusinessWorks, .NET, C++, Ruby, and Java services.

Built-in debugger supports testing and validation of projects within the design environment.

Automated "one click" deployment of projects across distributed applications and services.

About TIBCO

TIBCO Software Inc. (NASDAQ: TIBX) is a provider of infrastructure software for companies to use on-premise or as part of cloud computing environments. Whether it's efficient claims or trade processing, cross-selling products based on real-time customer behavior, or averting a crisis before it happens, TIBCO provides companies the two-second advantage™ - the ability to capture the right information, at the right time and act on it preemptively for a competitive advantage. More than 4,000 customers worldwide rely on TIBCO to manage information, decisions, processes and applications in real-time. Learn more at www.tibco.com.

Web-based interface for delegated administration and management.

A common web-based console, TIBCO ActiveMatrix® Administrator, centralizes SOA monitoring and management of services, TIBCO products, and details from operating systems and application servers via TIBCO Hawk®, TIBCO's distributed management framework.

Wizards for common tasks such as setting up load balancing, fault tolerance, and automated multi-stage distributed deployment.

Built-In Governance Support

A central XML repository for storing process definitions, transformation, routing logic; security and policy rules; and other metadata that can be shared to foster collaborative development.

Supports UDDI-based registries such as TIBCO ActiveMatrix® Registry for service discovery.

Distributed security administration, with support for third-party identity management systems.

Embedded policy enforcement for ActiveMatrix BusinessWorks managed using TIBCO ActiveMatrix® Policy Manager and configured within ActiveMatrix Administrator.

Standards-Based Heterogeneous SOA

Support for web services standards including SOAP over HTTP/S, JMS, UDDI, WSDL, and MTOM (Message Transmission Optimization Mechanism) for SOAP messages with attachments.

Mediates across leading standards-based protocols including HTTP/S, FTP, SMTP,

JDBC, TIBCO Rendezvous®, and leading JMS-based messaging software including TIBCO Enterprise Message Service™ and IBM MQSeries.

Built-in authoring tool for XML schema, native parsing, and rendering capabilities and an XSLTbased mapping tool and transformation engine.

Can be deployed standalone or run on the TIBCO ActiveMatrix® Foundation.

Support for developing Java, .NET, C++, and Ruby services through TIBCO ActiveMatrix® Service Grid.

Supports Java types and methods for easy "no coding required" access to Java EE, JMS, and EJB-based custom and third-party libraries.

Support for packaged applications and technologies through TIBCO Adapters.

Support for a lightweight and more scalable HTTP server implementation based on NIO (Non-Blocking I/O).

PLATFORM, STANDARDS AND SECURITY

- Microsoft Windows 2000, XP and 2003 (x86)
- Solaris 2.7, 8, 9 and 10 (SPARC), Solaris 10 (x86)
- HP-UX 11.x on IA-64/Itanium and PA-RISC (HPPA, HP JRE)
- Linux 2.4 Kernel (X86, 2.4.6 and up, glibc2.2.2 and up) Including Red Hat AS 3.0, Enterprise Linux 4.0, SUSE Linux Enterprise 8 and 9, Oracle Enterprise Linux 4
- AIX 5.1, 5.2, 5.3 (RS/6000, IBM JRE)

Global Headquarters
3303 Hillview Avenue
Palo Alto, CA 94304

Tel: +1 650-846-1000
+1 800-420-8450
Fax: +1 650-846-1005

www.tibco.com

